

ADDENDUM NO. 1

CITY OF SAN RAMON
PAVEMENT MANAGEMENT 2023 PROJECT AND CITYWIDE BICYCLE NETWORK
IMPROVEMENTS & ENHANCEMENTS (CIP 000008, CIP 905613)
Bid Date: Tuesday, June 28, 2023 – 2:00 PM

TO ALL BIDDERS:

Notice is hereby given that the following revisions are hereby made a part of and incorporated into the contract documents for the subject project:

Change No. 1: Green Back Sharrows have been added to Bid Set Plans, Striping Legend, sheet 2 of 75, and symbols have been updated. Bid Schedule quantities have not changed. Please refer to clouded areas in revised sheets of the Plan Set.

Change No. 2: Yield Triangles have been added to Bid Set Plans Striping Legend, sheet 2 of 75. Bid Schedule quantities have not changed. Please refer to clouded areas in revised sheets of the Plan Set.

Change No. 3: Area B, and Area G construction area sign estimated locations have been added to Bid Set Plans, Key Map sheet 3, and 4. Bid Schedule Estimated Quantities have been updated for Bid Item Number 3. Please refer to the following; bolded bid item estimated quantity on Page 11, of the Bid Documents; and refer to clouded areas in the revised sheets of the Plan Set.

Change No. 4: Added note: See Sheet 16, 2401 Crow Canyon Road, Parking Lot-Slurry, to sheet 3, and 5. Bid Schedule quantities have not changed. Please refer to clouded areas in revised sheets of the Plan Set.

Change No. 5: Removed crosswalk, added reference for ladder crosswalk, and revised quantities, plan sheet 7. Bid Schedule Estimated Quantities have been updated for Bid Item Number 28. Please refer to the following; bolded bid item estimated quantity on Page 12, of the Bid Documents; and refer to clouded areas in the revised sheets of the Plan Set

Change No. 6: Added estimated slurry seal quantity for 2401 Crow Canyon Road Parking Lot, sheet 16. Bid Schedule quantities have not changed. Please refer to clouded areas in revised sheets of the Plan Set.

All bidders shall acknowledge receipt and acceptance of Addendum No. 1 by signing in the space provided at the end of this Addendum and submitting the signed Addendum with the bid package. Acknowledgement shall also be indicated on the first page of the "BID PROPOSAL" form of the contract documents.

Bids will not be accepted unless Addendum No. 1 is attached to the bid proposal.

Please incorporate the listed changes within this Addendum into the Contract Documents.

City of San Ramon



Robin Bartlett, P.E., G.E., CFM, QSD
Division Manager

Date: 6/16/23

Please sign and return with your proposal to acknowledge receipt.

Signature of Bidder, Title

Date: _____

Company

**PAVEMENT MANAGEMENT 2023 PROJECT AND CITYWIDE BICYCLE NETWORK
IMPROVEMENTS & ENHANCEMENTS (CIP 000008, CIP 905613)**

ADDENDUM NO. 1

ACKNOWLEDGEMENT

I have received Addendum No. 1 to the Contract Plans and Specifications titled **“Pavement Management 2023 Project and Citywide Bicycle Network Improvements & Enhancements (CIP 000005, CIP 905613)”**. I have read and understood the information stated in the Addendum.

Bidder’s Signature

Date

Bidder’s Name (Printed)

Name of Company

*****RETURN WITH BIDDER’S PROPOSAL*****

**CITY OF SAN RAMON
PAVEMENT MANAGEMENT 2022 PROJECT AND CITYWIDE BICYCLE NETWORK
IMPROVEMENTS & ENHANCEMENTS (CIP 000005, CIP 905613)**

**ADDENDUM NO. 1
June 16, 2022**

TO: ALL HOLDERS OF THE Plans and Specifications for the City of San Ramon's
**"Pavement Management 2023 Project and Citywide Bicycle Network
Improvements & Enhancements (CIP 000008, CIP 905613)".**

FROM: City of San Ramon – Public Works Department

The following modifications and/or clarifications to the Contract Documents are provided. They shall be incorporated into the plans and specifications of the Pavement Management 2023 Project and Citywide Bicycle Network Improvements & Enhancements scheduled for bid opening on **Wednesday, June 28, 2022 at 2:00pm**:

A. Project Plans

1. Replace Sheets 2, 3, 4, 5, 7, and 16 in their entirety with the revised sheets shown on this addendum. Revisions are shown in clouds.

B. Project Bid Schedule

1. Replace Page 11 and 12 in its entirety with revised sheet shown on this addendum. Revisions are shown in bold.

(See next pages for content)

GENERAL NOTES

1. THE LOCATIONS OF SURFACE UTILITIES SHOWN ON THESE PLANS ARE APPROXIMATE ONLY. IT SHALL BE THE RESPONSIBILITY OF THE CONTRACTOR TO VERIFY EXACT LOCATION. THIS VERIFICATION SHALL BE COORDINATED BY THE CONTRACTOR WITH THE APPROPRIATE UTILITY COMPANY AS REQUIRED. [CALL U.S.A. (UNDERGROUND SERVICE ALERT) FOR UTILITY LOCATION QUESTIONS AT LEAST 2 WORKING DAYS BEFORE DIGGING. PHONE 1-800-277-2600 (OR DIAL 811)]
2. ALL PAVEMENT MARKING AND STRIPING SHOWN WITHIN THE LIMITS OF CONSTRUCTION OR OTHER AREAS AS NOTED ON THE PLANS, SHALL BE REPLACED BY THE CONTRACTOR, IN ACCORDANCE W/ CALTRANS STANDARD PLANS & CITY OF SAN RAMON SPECIFICATIONS & PROJECT SPECIFICATIONS, OR AS DIRECTED BY THE CITY ENGINEER.
3. THE CONTRACTOR SHALL COMPLY WITH THE PROVISIONS OF THE CITY OF SAN RAMON AND SHALL FOLLOW STORM WATER BEST MANAGEMENT PRACTICES AS SPECIFIED IN THE CITY OF SAN RAMON STANDARD SPECIFICATIONS & PROJECT SPECIFICATIONS.
4. THE LOCATION AND EXTENT OF THE WORK MAY BE MODIFIED IN THE FIELD BY THE CITY ENGINEER.
5. THE CONTRACTOR SHALL RESTORE ALL DAMAGED, REMOVED, OR OTHERWISE DISTURBED WALLS, FENCES, SERVICES, UTILITIES, IMPROVEMENTS OR FEATURES OF WHATEVER NATURE, DUE TO CONTRACTOR WORK AT THE CONTRACTOR'S EXPENSE.
6. THE CONTRACTOR SHALL GIVE THE CITY ENGINEER TWO WORKING DAYS ADVANCE NOTICE FOR INSPECTION.
7. THE CONTRACTOR SHALL CONTROL DUST AT ALL TIMES AND SWEEP STREETS AS OFTEN AS NECESSARY DURING CONSTRUCTION, AS REQUIRED BY THE CITY ENGINEER.
8. THE CONTRACTOR SHALL NOTIFY THE APPROPRIATE AGENCIES PRIOR TO THE START OF ANY WORK WHICH MAY AFFECT THEIR FACILITIES. THE FOLLOWING UTILITIES AND AGENCIES ARE KNOWN TO HAVE FACILITIES WITHIN THE PROJECT LIMITS:
 AT&T (TELEPHONE)
 CENTRAL CONTRA COSTA SANITARY DISTRICT
 COMCAST (CABLE VISION)
 EAST BAY MUNICIPAL UTILITY DISTRICT (WATER)
 PACIFIC GAS & ELECTRIC
 PACIFIC BELL
 CITY OF SAN RAMON PUBLIC SERVICES
 DUBLIN SAN RAMON SERVICES DISTRICT
 SAN RAMON VALLEY FIRE PROTECTION DISTRICT
9. THE CONTRACTOR SHALL COMPLY WITH THE RULES AND REGULATIONS OF THE STATE CONSTRUCTION SAFETY ORDERS AND CAL/ OSHA. THIS REQUIREMENT SHALL BE MADE TO APPLY CONTINUOUSLY AND NOT BE LIMITED TO NORMAL WORKING HOURS.
10. THE CONTRACTOR SHALL PROVIDE FOR CONTINUOUS INGRESS AND EGRESS TO ALL PRIVATE PROPERTIES ADJACENT TO THE WORK THROUGHOUT THE PERIOD OF CONSTRUCTION UNLESS OTHERWISE SHOWN.
11. THE CONTRACTOR SHALL LOCATE, REFERENCE AND SET SUFFICIENT MARKS FOR ALL EXISTING CITY OWNED AND NON-CITY OWNED UTILITY BOXES, MANHOLE COVERS, VALVE COVERS, MONUMENT LIDS, ETC., PRIOR TO ANY WORK WITHIN THE WORK ZONE.
12. THE FINAL ADJUSTMENT TO FINISHED GRADE OF ALL FRAMES, COVERS AND MANHOLES SHALL BE MADE FOLLOWING PLACEMENT OF THE TOP LAYER OF ASPHALT CONCRETE UNLESS OTHERWISE NOTED.
13. MONUMENTS SHOWN ON THESE PLANS ARE NOT INTENDED TO BE A FULL CATALOG OF EXISTING MONUMENTS. ALTHOUGH EVERY EFFORT HAS BEEN MADE TO MARK THE LOCATION OF ALL MONUMENTS WITHIN THE LIMITS OF WORK, NOT ALL MONUMENTS MAY BE SHOWN, AND THOSE SHOWN ARE SHOWN IN THEIR APPROXIMATE LOCATION ONLY (SCHEMATICALLY). CAREFULLY WALK EACH STREET AND CATALOG ALL EXISTING MONUMENTS OF WHATEVER CHARACTER, WHETHER SHOWN ON THESE PLANS OR NOT. IF FOUND MONUMENTS OF WHATEVER CHARACTER (SUCH AS BUT NOT LIMITED TO: STANDARD CITY MONUMENTS, IRON PIPES, RAILROAD SPIKES, NAIL AND SHINERS TAGGED WITH LS NUMBER, OR OTHER, ASIDE FROM VISIBLY OLD FLIGHT CROSSES OR TEMPORARY CONTROL POINTS) ARE FOUND WITHIN THE LIMITS OF WORK, BUT ARE NOT SHOWN ON THESE PLANS, NOTIFY THE CITY ENGINEER PRIOR TO THE START OF WORK. UNDER NO CIRCUMSTANCES SHALL ANY EXISTING MONUMENT BE PAVED OVER OR COVERED. DISTURBED MONUMENTS SHALL BE RESTORED PER THEIR ORIGINAL CHARACTER (I.E. TYPE) AND TO THEIR ORIGINAL LOCATION UNDER THE DIRECTION OF THE CITY'S SURVEYOR.
14. RIGHT-OF-WAY LINES SHOWN ON THESE PLANS ARE APPROXIMATE ONLY FOR GENERAL GUIDANCE.

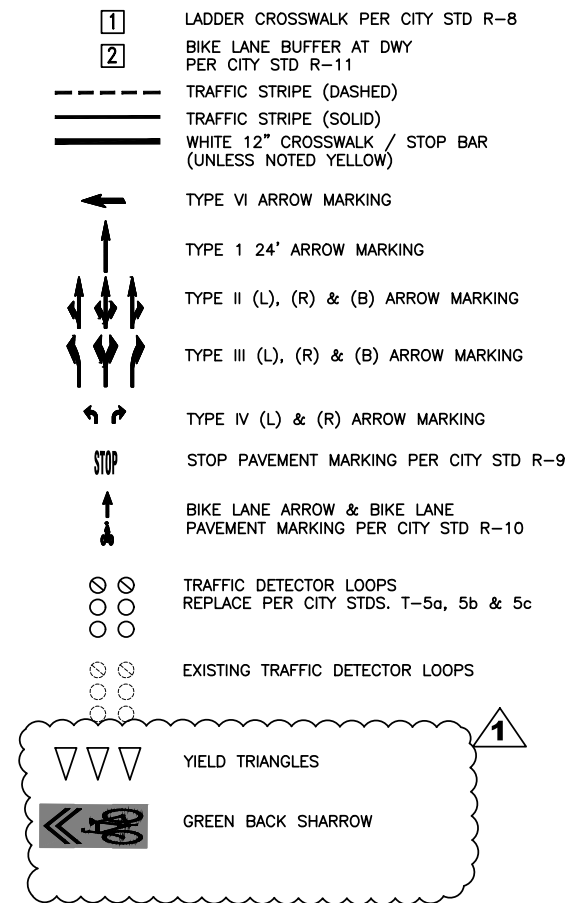
CONSTRUCTION NOTES

1. ALL EXISTING SURFACE UTILITY FACILITIES SUCH AS BUT NOT NECESSARILY LIMITED TO: WATER VALVES, GAS VALVES, VAULTS, MANHOLES, ETC. SHALL BE PROTECTED IN PLACE AND ADJUSTED TO GRADE AS NECESSARY PER PROJECT SPECIFICATIONS.
2. SEE PROJECT SPECIFICATIONS FOR PRESERVATION OF EXISTING MONUMENTS.
3. INSTALL BLUE MARKERS AT EACH FIRE HYDRANT LOCATION PER "BLUE MARKER LOCATION", SHEET 67 WHETHER FIRE HYDRANTS ARE SHOWN ON THESE PLANS OR NOT.
4. PAVEMENT STRIPING AND MARKING SHALL BE REMOVED & REPLACED PER PLAN AFTER APPLYING ASPHALT CONCRETE, SLURRY, OR MICROSURFACING TO EXISTING PAVEMENT. STRIPING AND PAVEMENT MARKINGS SHALL BE THERMOPLASTIC UNLESS OTHERWISE NOTED.
5. ALL STRIPING SHALL BE CAT TRACKED BY THE CONTRACTOR AND APPROVED BY THE CITY ENGINEER PRIOR TO FINAL INSTALLATION. A MINIMUM OF 48 HOURS NOTICE IS REQUIRED.
6. UTILITY FACILITIES SHOWN ARE SCHEMATIC ONLY AND ARE NOT COMPLETE. NOT ALL WATER VALVES, MONUMENT COVERS, UTILITY VAULTS, ETC. ARE SHOWN. CONTRACTOR SHALL FIELD VERIFY AND INVENTORY ALL UTILITY AND OTHER FEATURES PRIOR TO BEGINNING OF CONSTRUCTION.
7. LIMITS OF PAVING ARE THE EDGE OF EXISTING PAVEMENT. CONTRACTOR SHALL FIELD VERIFY EXISTING EDGE OF PAVEMENT PRIOR TO BEGINNING OF CONSTRUCTION.
8. FOR STRIPING DETAILS, REFER TO LIST OF STANDARDS PLANS ON SHEET 2.
9. WHERE STRIPING DETAIL 22MOD IS INDICATED, REFER TO CITY STANDARD DETAIL R-9.
10. FOR STOP BAR APPLICATIONS, REFER TO CITY STANDARD DETAIL R-9, UNLESS OTHERWISE NOTED.
11. WHERE STRIPING DETAIL 26MOD IS INDICATED, REFER TO CITY STANDARD DETAIL R-9.
12. REMOVE ALL THERMOPLASTIC STRIPING & MARKINGS BEFORE SURFACE TREATMENT OR IF NO SURFACE TREATMENT BEFORE RE-STRIPING.
13. STOP BARS SHALL BE PLACED PRIOR TO EXISTING CURB RAMPS AND NOT ENCROACH INTO THE PEDESTRIAN WALKWAY.
14. ALL STOP BARS ARE 12 INCH WHITE UNLESS NOTED OTHERWISE.
15. ALL CROSSWALKS ARE 12 INCH WHITE UNLESS NOTED OTHERWISE.

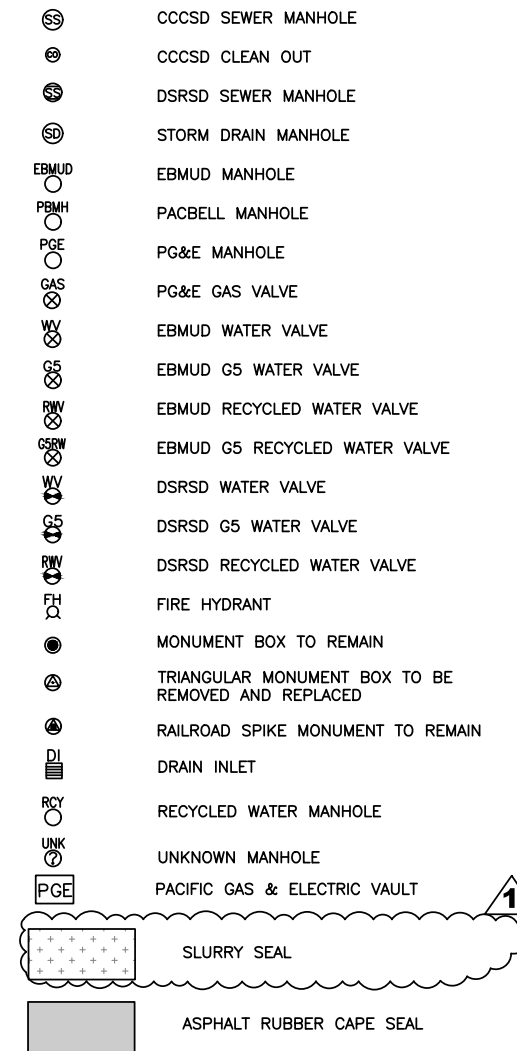
ABBREVIATIONS

AC	ASPHALT CONCRETE
AB	AGGREGATE BASE
BW	BROKEN WHITE
CL	CENTER LINE
CCCSD	CONTRA COSTA COUNTY SANITARY DISTRICT
DSRSD	DUBLIN SAN RAMON SERVICES DISTRICT
C&G	CURB AND GUTTER
CJ	CONSTRUCTION JOINT
CONC	CONCRETE
DET	DETAIL
DWS	DETECTABLE WARNING SURFACE
DWY	DRIVEWAY
EP	EDGE OF PAVEMENT
E.W.	EACH WAY
(E)	EXISTING
FC	FACE OF CURB
FH	FIRE HYDRANT
GV	GAS VALVE
HMA	HOT MIX ASPHALT
LG	LIP OF GUTTER
MON	MONUMENT
NTS	NOT TO SCALE
(N)	NEW
PCC	PORTLAND CEMENT CONCRETE
PVMT	PAVEMENT
ROW	RIGHT-OF-WAY
RSP	REVISED STANDARD PLANS
RWV	RECYCLED WATER VALVE
SJ	SCORE JOINT
SD	STORM DRAIN
SDMH	STORM DRAIN MANHOLE
SSMH	SANITARY SEWER MANHOLE
S/W	SIDEWALK
STD	STANDARD
TBD	TO BE DETERMINED
TC	TOP OF CURB
TRI	TRIANGULAR MONUMENT
TYP	TYPICAL
TOT	TOTAL
WV	WATER VALVE

STRIPING LEGDEND



PAVEMENT LEGEND



SHEET INDEX

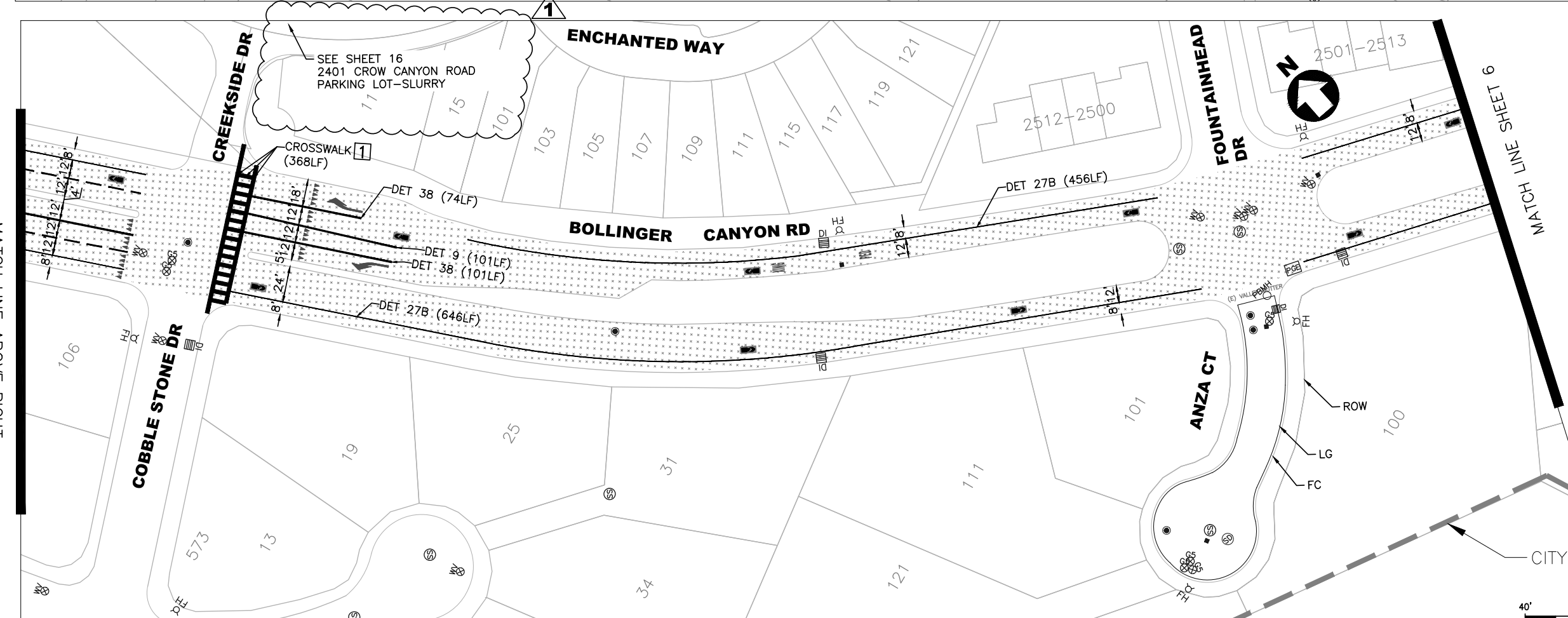
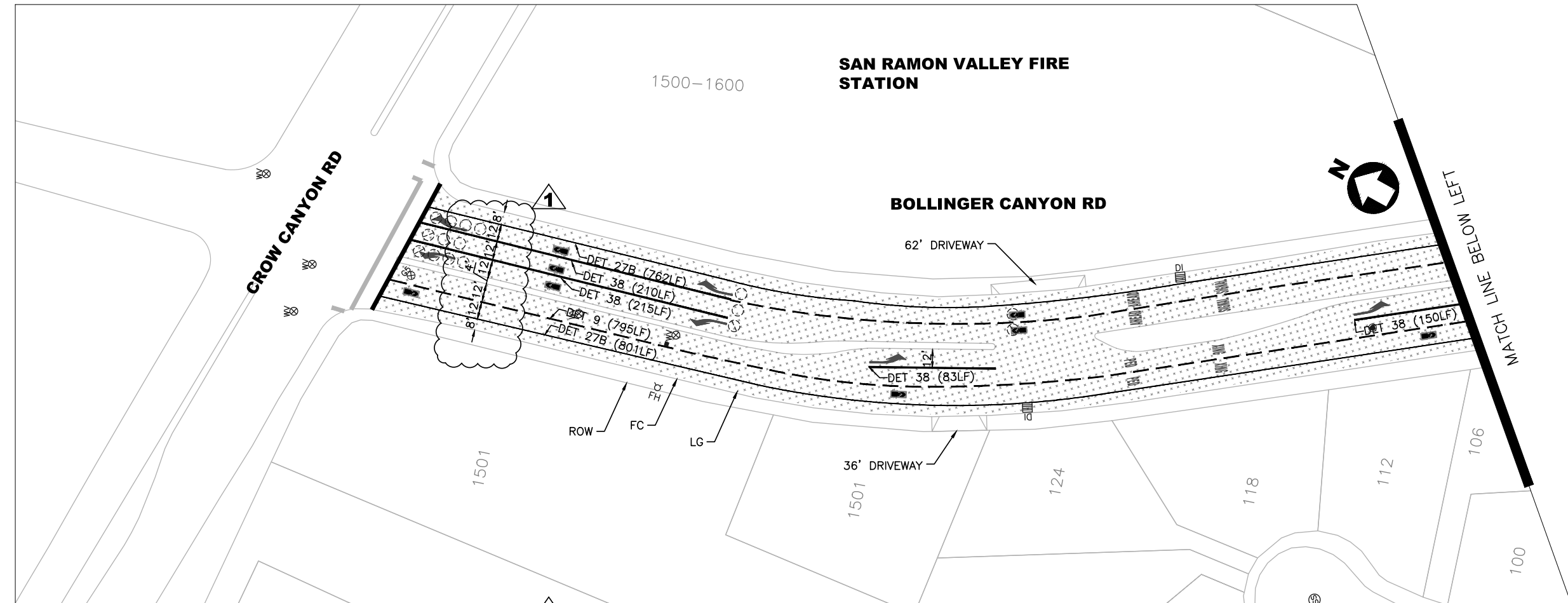
NO.	DESCRIPTION
1	COVER SHEET
2	NOTES, ABBREVIATIONS, SHEET INDEX, & APPLICABLE STANDARD PLANS
3-4	KEY MAP
5	PAVING & STRIPING PLAN - AREA A
6-39	PAVING & STRIPING PLAN - AREA A
40	PAVING & STRIPING PLAN - AREA B
41-54	PAVING & STRIPING PLAN - AREA C
55-60	PAVING & STRIPING PLAN - AREA D
61-63	PAVING & STRIPING PLAN - AREA F
64-65	PAVING & STRIPING PLAN - AREA E
66-70	PAVING & STRIPING PLAN - AREA G
70A	PAVING & STRIPING PLAN - AREA B
71	CITY STANDARD DETAILS
72	CITY STANDARD DETAILS
73	CITY STANDARD DETAILS
74	REFERENCE DRAWING
75	CONSTRUCTION BEST MANAGEMENT PRACTICES (BMPs)

APPLICABLE STANDARD PLANS

- INCLUDE BUT ARE NOT LIMITED TO THE FOLLOWING:**
- CALTRANS STANDARD PLANS (2022)**
 A20A, B & D PAVEMENT MARKERS AND TRAFFIC LINES, TYPICAL DETAILS
 RSP A20C PAVEMENT MARKERS AND TRAFFIC LINES, TYPICAL DETAILS
 RSP A24A, C & E PAVEMENT MARKINGS, ARROWS, SYMBOLS, NUMERAL WORDS, LIMIT AND YIELD LINES
 A24B, C & D PAVEMENT MARKINGS, ARROWS, SYMBOLS AND ARROWS
- SAN RAMON STANDARD DETAILS - PAVEMENT**
 R-1 STREET SURVEY MONUMENT
 R-8 CROSSWALK STRIPING
 R-9 STRIPING DETAILS
 R-10 BIKE LANE PAVEMENT MARKINGS
 R-11 BIKE LANE BUFFER STRIPING DETAILS

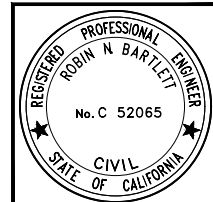
CA MANUAL ON UNIFORM TRAFFIC CONTROL DEVICES (CA MUTCD)
 FIGURES 6H-22B, 6H-23, 6H-25A, 6H-33

DATE									
APPENDUM NO. 1									
DESIGNED: SE/RR	DRAWN: VS/GL	APPROVED: RNE/DF							
CITY OF SAN RAMON ENGINEERING SERVICES DEPARTMENT 7000 BOLLINGER CANYON ROAD SAN RAMON, CALIFORNIA									
NOTES, ABBREVIATIONS, SHEET INDEX, APPLICABLE STANDARD PLANS PAVEMENT MANAGEMENT 2023 PROJECT & CITYWIDE BICYCLE NETWORK IMPROVEMENTS AND ENHANCEMENTS									
TITLE:									
SHEET 2 of 75									
CIP#: 000008 CIP# 905613									



- NOTES:**
- SEE SHEET 2 FOR GENERAL NOTES, SYMBOL AND LEGEND FOR UTILITIES, STRIPING AND PAVEMENT MARKING.
 - CHIP SEAL SHALL BE PLACED 3' FROM LIP OF GUTTER OR AS DIRECTED BY CITY INSPECTOR
 - CHIP SEAL SHALL BE PLACED 1' FROM UTILITY FRAME AND COVER OR CONCRETE FRAME, OR AS DIRECTED BY CITY INSPECTOR.
 - ALL STOP LIMIT LINE PLACEMENT WILL REFER TO CITY STANDARD DETAIL R-9. NO STOP LIMIT LINES WITHOUT MOD22 ON LOCAL STREETS.

- LEGEND:**
- RUBBER ASPHALT CAPE SEAL
 - SLURRY SEAL



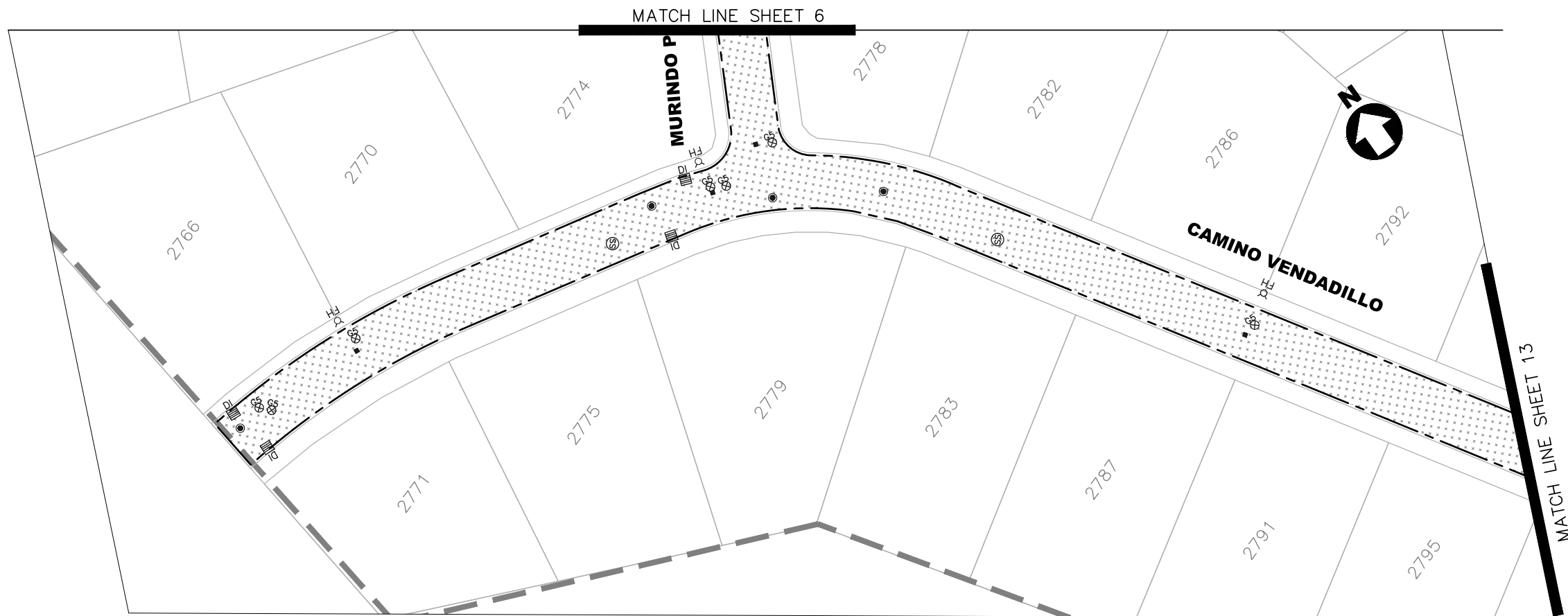
40' 0' 40' 80'
 1 INCH = 40 FEET
 SCALE IS REDUCED 50% WHEN SHEET SIZE IS 11"x17"

DESIGNED: SE/RR	DRAWN: VS/GL	APPROVED: RNB/DF	NO.	REVISIONS	DATE
CITY OF SAN RAMON ENGINEERING SERVICES DEPARTMENT 7000 BOLLINGER CANYON ROAD SAN RAMON, CALIFORNIA			ADDENDUM NO. 1		
PAVEMENT AND STRIPING PLAN PAVEMENT MANAGEMENT 2023 PROJECT & CITYWIDE BICYCLE NETWORK IMPROVEMENTS AND ENHANCEMENTS					
SHEET 5 of 75					
CIP#: 000008					
CIP#: 905613					
BID SET					

G:\PROGRAMS\CIP\CIP_000008_2023_PMP15_Design & Plans\Plans\CAD\SHEETS\PM23.dwg 05-16-2023 03:03:27 PM
 Plotted on: 06/15/23 @ 03:03:27 PM

C:\PROGRAMS\CIP\CIP 000008 2023 PMP15 Design & Plans\Plans\CAD\SHEETS\PM23.dwg 05-16-2023 @ 03:05:04 PM

Plotted on: 06/15/23 @ 03:05:04 PM



NOTES:

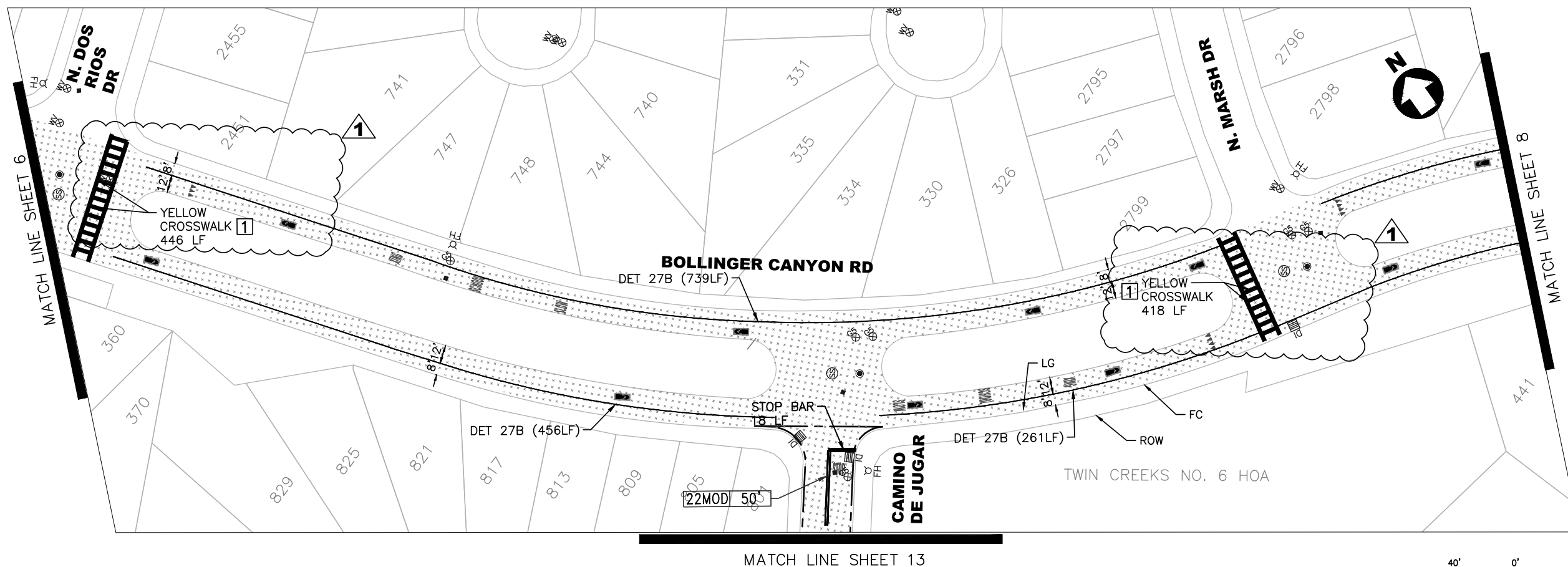
- SEE SHEET 2 FOR GENERAL NOTES, SYMBOL AND LEGEND FOR UTILITIES, STRIPING AND PAVEMENT MARKING.
- CHIP SEAL SHALL BE PLACED 3' FROM LIP OF GUTTER OR AS DIRECTD BY CITY INSPECTOR
- CHIP SEAL SHALL BE PLACED 1' FROM UTILITY FRAME AND COVER OR CONCRETE FRAME, OR AS DIRECTED BY CITY INSPECTOR.
- ALL STOP LIMIT LINE PLACEMENT WILL REFER TO CITY STANDARD DETAIL R-9. NO STOP LIMIT LINES WITHOUT MOD22 ON LOCAL STREETS.

LEGEND:

- RUBBER ASPHALT CAPE SEAL
- SLURRY SEAL

DESIGNED: SE/RR	DRAWN: VS/GL
APPROVED: RNB/DF	
ADDENDUM NO. 1	NO.
REVISIONS	DATE

CITY OF SAN RAMON
 ENGINEERING SERVICES DEPARTMENT
 7000 BOLLINGER CANYON ROAD
 SAN RAMON, CALIFORNIA



PAVEMENT AND STRIPING PLAN
PAVEMENT MANAGEMENT 2023 PROJECT &
CITYWIDE BICYCLE NETWORK IMPROVEMENTS AND ENHANCEMENTS

SHEET
7 of 75

CIP#: 000008
 CIP# 905613

BID SET

Bid Schedule

This Bid Schedule must be completed in ink and included with the sealed Bid Proposal. Pricing must be provided for each Bid Item as indicated. Items marked "(SW)" are Specialty Work that must be performed by a qualified Subcontractor. The lump sum or unit cost for each item must be inclusive of all costs, whether direct or indirect, including profit and overhead. The sum of all amounts entered in the "Extended Total Amount" column must be identical to the Base Bid price entered in Section 1 of the Bid Proposal form.

AL = Allowance CF = Cubic Feet CY = Cubic Yard EA = Each LB = Pounds
 LF = Linear Foot LS = Lump Sum SF = Square Feet TON = Ton (2000 lbs)

BID ITEM NO.	ITEM DESCRIPTION	EST. QTY.	UNIT	UNIT COST	EXTENDED TOTAL AMOUNT
1	Mobilization	1	LS	\$	\$
2	Traffic Control System	1	LS	\$	\$
3	Construction Area Signs	85	EA	\$	\$
4	Tree Trimming, and Tree Protection	1	LS	\$	\$
5	Temporary Pavement Delineation	1	LS	\$	\$
6	"Remove Pavement Markers, Stripes, & Markings"	1	LS	\$	\$
7	Slurry Seal	487,492	SY	\$	\$
8	Micro-surfacing	75,375	SY	\$	\$
9	Rubber Chip Seal	75,375	SY	\$	\$
10	Replace Water Valve Box with New G5*	9	EA	\$	\$
11	Raise Water Valve Frame to Grade	3	EA	\$	\$
12	Raise Storm Drain MH to Grade	1	EA	\$	\$
13	Raise Sanitary Sewer MH to Grade	3	EA	\$	\$
14	Raise Monument Frame to Grade & Preserve.	22	EA	\$	\$
15	Striping Detail 2	5,926	LF	\$	\$
16	Striping Detail 9	11,086	LF	\$	\$
17	Striping, Detail 12	8,910	LF	\$	\$
18	Striping, Detail 22	11,468	LF	\$	\$
19	Striping, Detail 22 MOD	6,327	LF	\$	\$
20	Striping, Detail 26 MOD	3,914	LF	\$	\$
21	Striping Detail 27B	1,850	LF	\$	\$
22	Striping Detail 29	223	LF	\$	\$
23	Striping, Detail 38	1,976	LF	\$	\$

BID ITEM NO.	ITEM DESCRIPTION	EST. QTY.	UNIT	UNIT COST	EXTENDED TOTAL AMOUNT
24	Striping, Detail 38B	290	LF	\$	\$
25	Striping, Detail 39	48,063	LF	\$	\$
26	Striping, Detail 39A	4,327	LF	\$	\$
27	White Crosswalk Lines (12" Wide)	5,612	LF	\$	\$
28	Yellow Crosswalk Lines (12" Wide)	2,051	LF	\$	\$
29	Parking Lot Striping (4" Wide) White or Blue	18,867	LF	\$	\$
30	White Hatch Marks (8" Wide)	787	LF	\$	\$
31	White Stop Bar Lines (12" Wide)	1,676	LF	\$	\$
32	Green Conflict Zones	7,657	SF	\$	\$
33	Green Back Sharrows	43	EA	\$	\$
34	Pavement Markings (Thermoplastic) - White or Yellow	7,918	SF	\$	\$
35	Pavement Markings (Thermoplastic) - White or Yellow (Non-Skid)	175	SF	\$	\$
36	Two-way Reflective Blue Pavement Marker	365	EA	\$	\$

* Final Pay Quantity

TOTAL BASE BID: Items 1 through 36 inclusive: \$ _____

Note: The amount entered as the "Total Base Bid" should be identical to the Base Bid amount entered in Section 1 of the Bid Proposal form.

BIDDER NAME: _____

END OF BID SCHEDULE